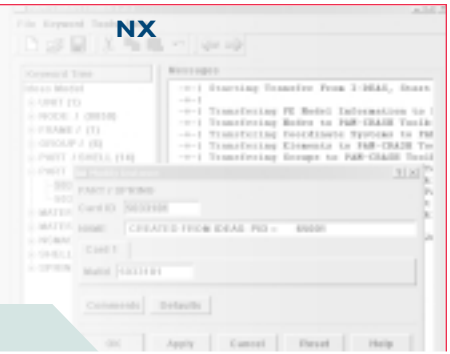


PAM-CRASH Data Translator

Advanced bi-directional interface between I-deas® NX Series and PAM-CRASH



fact sheet

www.ugsplm.com

► Summary

The PAM-CRASH Data Translator provides an advanced interface between PAM-CRASH and the simulation applications of I-deas NX Series, facilitating the exchange and sharing of data. Keywords are translated to their equivalent finite element entities on import. On export, I-deas finite element entities are written to the corresponding keyword. The PAM-CRASH Data Translator provides a forms-based environment to help users prepare models for translation to and from I-deas, or to make modifications in the PAM-CRASH deck. The current edition of the PAM-CRASH Data Translator supports PAM-CRASH Version 2002 file format.

Features

- Exports I-deas NX Series finite element models to PAM-CRASH keyword files
- Imports PAM-CRASH keyword files to I-deas
- Works with PAM-CRASH keyword files

Benefits

- Shorten model preparation time
- Reduce errors associated with manual data entry

The PAM-CRASH Data Translator is comprised of a main toolkit that can be accessed concurrently within the I-deas simulation applications. Keywords and keyword instances are laid out in a data tree with branches that expand and collapse, making management and editing of content simple and efficient. During keyword instance editing, users can select finite element entities from the I-deas graphics region. These features shorten model preparation time and reduce errors caused by manual data entry.

The PAM-CRASH Data Translator performs three basic tasks:

- Exports I-deas finite element models to PAM-CRASH keyword files
- Imports PAM-CRASH keyword files to I-deas
- Works with PAM-CRASH keyword files

Export capabilities

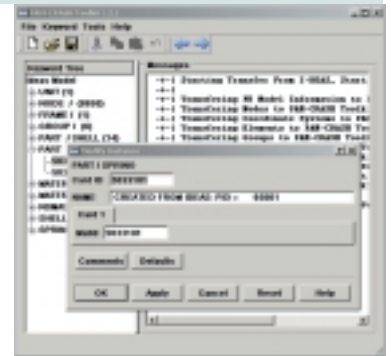
PAM-CRASH export capabilities include:

- Creation of complete finite element models
- Generation of groups, loads and boundary conditions
- Preparation of ready-to-run PAM-CRASH keyword files for vehicle safety analysis

Import capabilities

PAM-CRASH import capabilities include:

- Complete PAM-CRASH finite element models
- Option to process include files
- Direct importing of PAM-CRASH keyword data into I-deas (no generation of intermediate files)



Productivity tools

The PAM-CRASH Data Translator provides a set of productivity tools designed to facilitate model editing, merging and updating.

Mapping tool

Decrease keyword file building time using the data-mapping tool. This feature allows users to replay data in certain keyword instances in the current keyword file, with data from matching keyword instances in an external keyword file. Mapping works for the following keywords: FUNCT/, MATER/, PART/, PLY/, RBODY/ or SENSOR/.

Merging tool

The translator is equipped with a merging tool. Users can employ this tool to control how the keyword instances in a source file, or those being exported from I-deas, are added to the current keyword file. The tool is flexible, allowing users to merge all (or a selection of) keywords.

Supported keyword file formats

All PAM-CRASH keyword instances are supported. Two levels of support exist: basic text editing and full form editing.

- | | | |
|------------------|----------------|----------|
| • NODE_/, CNODE/ | • MASS/ | • BOUNC/ |
| • FRAME/ | • JOINT/ | • DIS3D/ |
| • BAR/, BEAM/ | • KJOIN/ | • RAN3D/ |
| • SHELL/ | • PART/ {ALL} | • CONLO/ |
| • SOLID/ | • MATER/ {ALL} | • PREFA/ |
| • TETRA/ | • NODCO/ | • GROUP/ |
| • SPRING/ | • RBODY/ | |

Computing platforms

PAM-CRASH Data Translator is supported on HP, Sun, IBM and SGI UNIX and Windows 2000/NT hardware platforms. Visit http://support.plmseds.com/online_library/certification/ for additional system configuration information.

Prerequisite

NX MasterFEM
I-deas Simulation Modeling Set



Contact

UGS PLM Solutions

Americas 800 498 5351
Europe 44 1276 705170
Asia-Pacific 852 2230 3333

www.ugsplm.com

